

MECHANICAL CHARACTERISTICS

Length (mm / inch)	306/12.0
Width (mm / inch)	168/ 6.6
Height (mm / inch)	220/8.7
Approx. Weight (kg / lbs)	28.6 Kg (63.1lbs)
Terminal Type/size	Copper
Cells	3
Nominal voltage	6V

ELECTRICAL CHARACTERISTICS

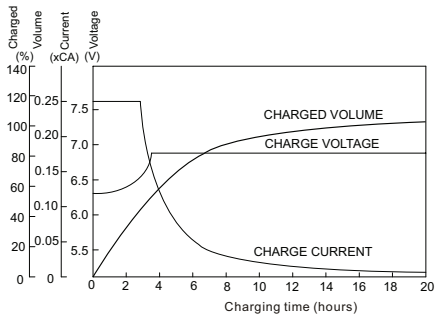
Nominal Capacity	77° F (25° C)	
Self-Discharge	3% of capacity declined per month at 20° (average)	
Max Discharge	900 A (5s)	
Short Circuit Current	3050	
Constant Voltage Charge 77°F (25°C)	Cycle use	2.40-2.45VPC Maximum charging current 0.33C 20hr
	Standby use	2.26-2.30VPC

ELECTRICAL CHARACTERISTICS

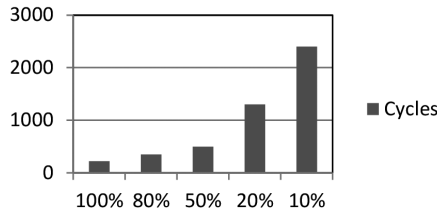
Capacity(25°)				Operating Temperature Range		
10hR	5hR	3hR	1hR	Discharge	Charge	Storage
180 Ah	164 Ah	153.3 Ah	127 Ah	-20~60°C	-10~60°C	-20~60°C

CHARGE / DISCHARGE TABLES & GRAPHS

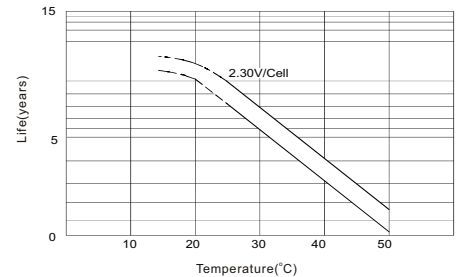
CHARGE CHARACTERISTIC CURVE



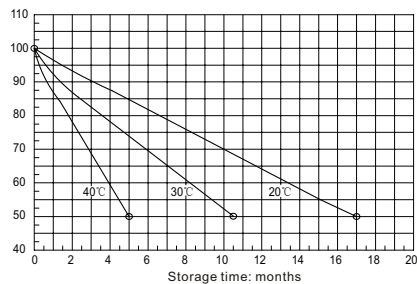
CYCLE LIFE SCP SERIES



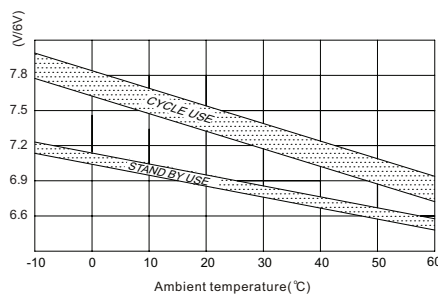
TEMPERATURE EFFECTS ON FLOAT LIFE



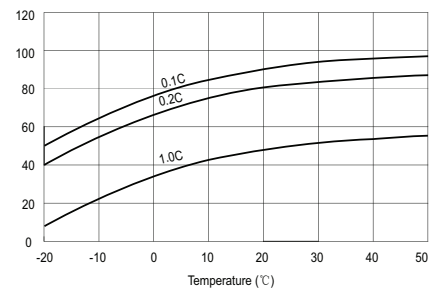
SELF-DISCHARGE CHARACTERISTIC



RELATIONSHIP BETWEEN CHARGING VOLTAGE AND TEMPERATURE



TEMPERATURE EFFECTS ON CAPACITY



To ensure safe and efficient operations always refer to the latest edition of our Technical Manual, as published on our Web site. All specifications subject to change without notice.

