

ENERGY POWER

MARKETED BY



1800 Roswell Road, Suite #2200
Marietta, GA 30062
1-888-823-0954

www.energybattery.com

EP-SLA6-215I

6V 215 AMP HR

FEATURES:

- Superior performance with Absorbent Glass Mat (AGM) technology
- Safe operation with valve regulated, spill proof construction
- Unrivalled performance of delivered energy of any battery in its class
- UL Certified under file # MH47790
- Rugged impact resistant ABS case and cover
- Ease of movement with integrated ABS carrying handles
- Approved for transport by air. D.O.T., I.A.T.A., F.A.A. and C.A.B. certified

To ensure safe and efficient operations please refer to www.energybattery.com. All specifications subject to change without notice.



SEALED RECHARGEABLE BATTERY

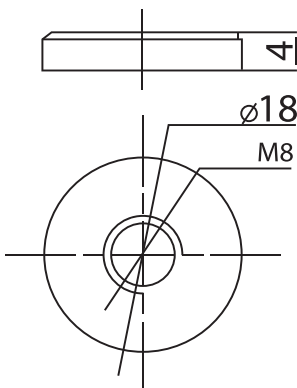


TERMINALS (mm):

M8

Copper insert

Tolerance +/- 0.1mm. All data subject to change without notice.



PHYSICAL DIMENSIONS:

	inches	mm
L:	12.00	306
W:	6.60	168
H:	8.70	220
HT:	8.90	226

Tolerance +/- 2mm. All data subject to change without notice.

PERFORMANCE SPECIFICATIONS:

Nominal Voltage 6 volts (3 cells in series)

Nominal Capacity (77° F (25° C))

20-hr. F.V.(1.75V/cell)(10.75A to 5.25volts)215.0 Ah

10-hr. F.V.(1.75V/cell)(20.5A to 5.25volts) 205.00 Ah

5-hr. F.V.(1.75V/cell)(36.55 to 5.25volts)..... 182.75Ah

1-hr. F.V.(1.75V/cell)(120.4A to 5.25volts).....120.40 Ah

Approximate Weight63.10 lbs (30 kgs)

Internal Resistance (approx.)..... 5 milliohms

Capacity Affected by Temperature (at 20 hour rate)

40°C.....102%

25°C.....100%

0°C 85%

-15°C 65%

Self-discharge (remaining capacity % at 25°C)

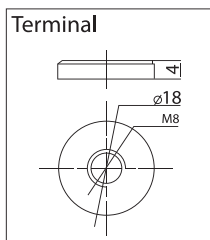
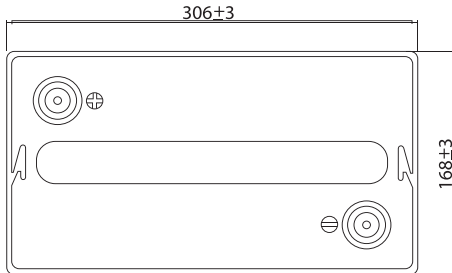
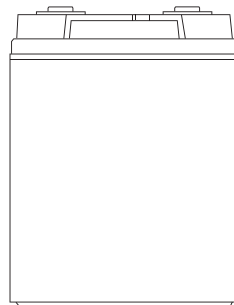
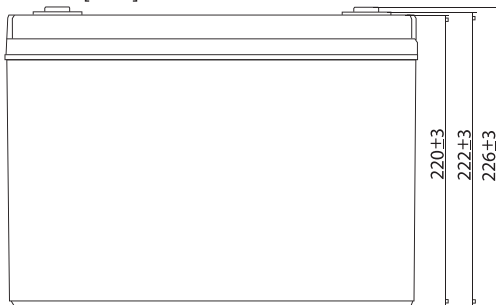
3 months..... 91%

6 months..... 82%

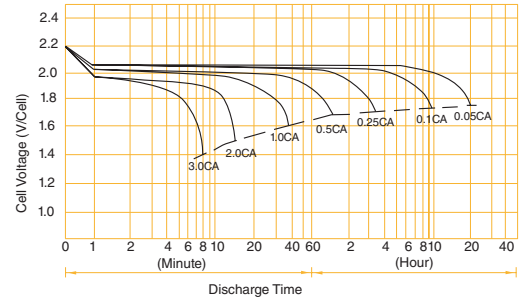
12 months..... 64%

Case..... ABS Plastic

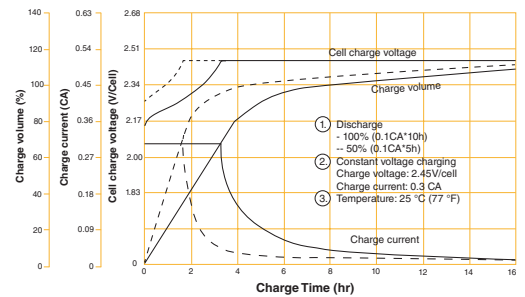
unit:mm[inch]



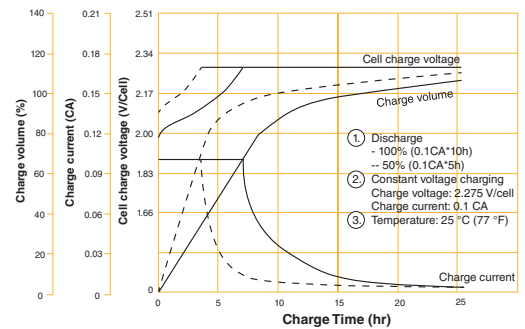
BATTERY DISCHARGE CHARACTERISTICS



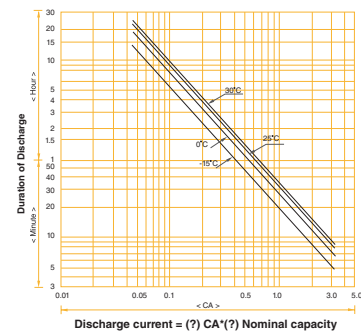
BATTERY CHARGING CHARACTERISTICS FOR CYCLIC USE



BATTERY CHARGING CHARACTERISTICS FOR STANDBY USE



BATTERY DISCHARGING CURRENT VS DISCHARGING TIME



BATTERY CHARGE CHARACTERISTICS FOR CYCLE USE & STAND-BY USE

Application	Charging method	Charge voltage at 25° (V/cell)	Temperature compensation coefficient of charging voltage (mV/°C-cell)	Max. charging current (CA)	Charging time 0.1CA, 25°C(h)		Temp (°C)
					100% DOD	50% DOD	
For standby power source	Constant voltage charging (with current restriction)	2.25~2.30	-3	0.2	24	20	0~40°C (32~104°F)
For cycle service		2.40~2.50	-4	0.2	16	10	



MARKETED BY



ENERGY BATTERY GROUP INC.

1800 Roswell Road, Suite #2200, Marietta, GA 30062
1-888-823-0954 • www.energybattery.com